

A



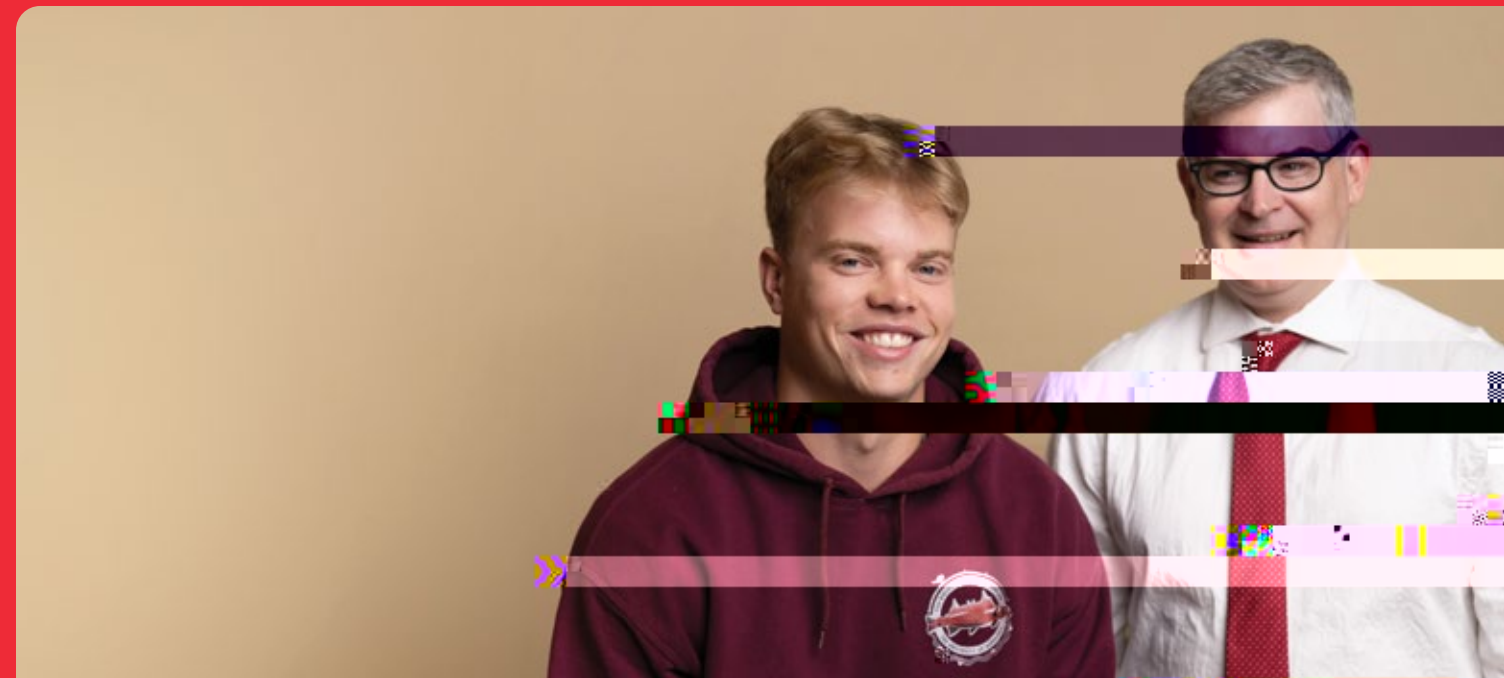
m



T

“

”





A C

Elj freem, c erf ma ce, reę aD, a d r r r ar er, TeMa, ba C er a r fM, c&Ar. S de ca aD acce d rac, ce ace.

GaD r 1C03, UW e' cam ar aD. Ta e, a aę fe, b r e ear, r ca e r ar, ra aD affa d de e, b.

O rT ea rea dF de arme e f e a e Ca ada, a d de ca a e, freeDe erf ma ce r cam a ef e, edA erCe re f rT ea rea dF.

R

L, re, de ce c ec e ear f de De cam a dffer ec e, e ce f be m, e a a frm ca. Be ar fa cmm r are d m a dfr, ed a arme, McFee r Ha r da me a a frm me ared- eD, BaD raD H e. Fa mD are aD a a b e.

D

Y d' a e e a e cam e fre, deD a da e, c d e ma d fr m cra c. A ard, D er, F d Ser ce era e ma f e a r a a d ca e a UW, e, a d, a rec ed eader, a ab e f d er, ce.

R W

T eA r HeaD & RecP a a e- f- e- ar faD, a cmm, m a da, d r ree ace a accmm da e a aę f r e ccer, fa f baD a d rac a d eD. Y ca e e ar, aD r f eD, f r a e r rac, re rac ab e ba, ca e, r e da ce/ a d.

S a, re ra, a d ba e baD are j me f e free, ram raD, ca e, a d dr - r a a a b e UW, e de. Tere' me f r e er, ere a de er, eD

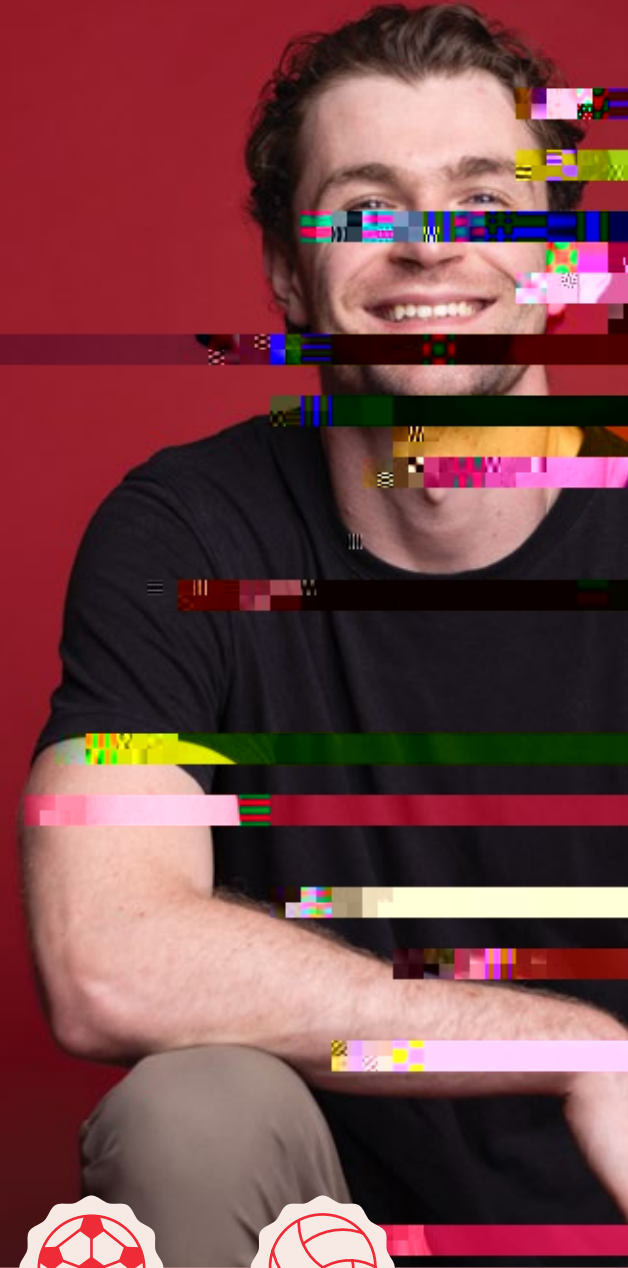
T eB e Wed e F e Ce re fea re aD card e, me, e mac, e, a d free e.

4.5.04.5.c04.5.06.985.021 85.-8 (-8 c21 85.-8 4.5.06.985.4.5.04.5.c4.5.021/5.e 85.1.1.1.cS DE 0 9 8 9 4 2 8 8 0 - 1 2 e f e c c e 2 1 8 (. B 3, 8 e 7 8 5 0 4 1 0 8 3, 3 0 0 0 (5) T 5 1 . 3 6 8 3 9 8 0 3 9 5 8 6 3 T u 5 m 1 9 9 e f i 3 3 3 e T f m 1 4 c 1 2 0) T j , e) 1 0 (. 4 0) T j m a d a d f D e y , m . 4 0) T j (c a





Our campus is located in one of Canada's most diverse neighbourhoods. Make new friends,



S



A degree from UWinnipeg opens up a world of possibilities.

95.9%

UWinnipeg grads have an employment rate of 95.9% two years after graduating.

25:1

is the estimated student-to-professor ratio at UWinnipeg.

F P

Olivia Friesen has been working for the Winnipeg Blue Bombers as an assistant athletic therapist since she graduated with a Bachelor of Science in Kinesiology. She loves helping people and hopes to one day be in charge of her own team.

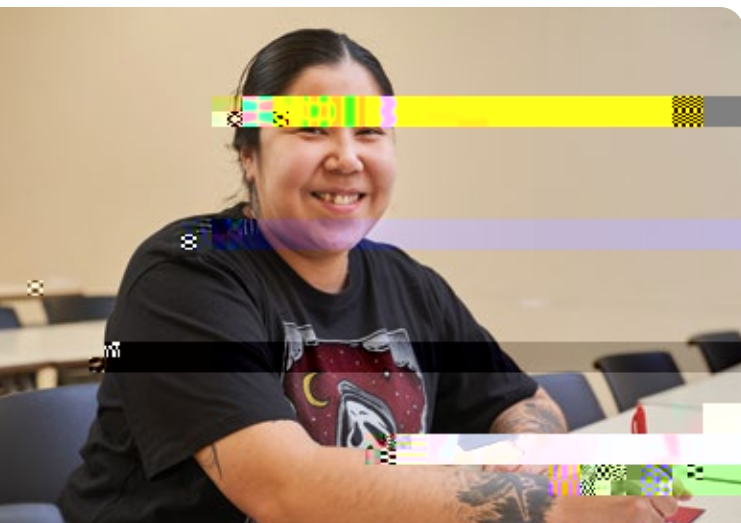
“I would absolutely recommend UWinnipeg to anyone. When you have a hands-on program, it’s great to be able to know each and every person you’re in class with. You get more one-on-one . . .”



V P UW

See what your student experience could look like over the course of four years studying at UWinnipeg!





Classics

Fr e , a de, re der a d rm der r d,
 , a , dea a be , . Ca , ca d de , r d ce
e , r , c D re, Oera re , D , a dar fa ce
Greece a d R me. S d e a ce f rea e
a d , D er c a Pa , S ca , Vr , D
a d C cer a d a , re earc a d r , .

BA 3YR / 4YR / Honours

Conflict Resolution Studies

T , , er d c D ar e d dea D , e a rea d
d am, c f ma c f, c. l e Dre , c f , ce,
er, j , ce, eace, c mm , ca , a d c D re, a e
a er a d ca da d Oba c f, c. C e fr m c re
 , a a e f d ffe re bjec area , a d c m e a
 , rac, c m r ram , e era Oca D r , er a , a De , .

BA 3YR

Criminal Justice

E an, e c ce a d rac, ca Da , ca , f j , ce,
a e da , r ca da d c em rar e a a , f
re e , c r me. S de are c a d ed
c r , ca d ab j , ce, be ac, e ed, e e , e
c fr , e c r m , a d , ce em , e re a d
ea e e f , b e ref m , a d e e , ca d e m ma
fa c r m , a d , ce rac , , er .

BA 3YR / 4YR / Honours

Dance

T , j , r ram , T e Sc D f C em rar
Da cer ffer e ad a a e f c ce ra ed,
c er a r - e da ce ra , eam ed , a Oera D
ar ed ca , . T e c m b a , de , ed re are
de be erf m er a dar , f , de-ra ,
a d de erce , e e . Adm , e da ce c D
 , b a d , , f r de , , em e da e ra , .

BA 3YR / 4YR / Honours

Disability Studies

T , ab ' d ab D , a d ' ab D , e a . U,
e ca m de Da er a e b m e d ca m de D e
r b e m bec me a c r fram ra er a me e
 , a e e a r. T e f c f , er d c D ar
r ram , e c r , ca da a d , f d ab D , ce .

BA 3YR / 4YR / Honours / Joint Degree-Diploma (RRC Polytech)

East Asian Languages and Cultures

S d e C , e e, Ja a e e, a d K rea a a e
a d de De , e , e c a d e ac , c D ra D ab ,
re D , a d ca da De , Oera re , a d , r f
e Ea A , a re , . Ga , , , a d am, cre ,
a , am a j r fac r , c r re affa r a d a , r
Oba c ref r ear c , j , r r , c r r ad a (4)1038.2

de a r a d c 8 d10 665.808 r F)26004 Tc 1r5 a d p728.41 (Tc 0a df 2971128.44 (31 a d p150.004 (d)4 (C)-1 ()1.5 (D-10.3 ()-14.5 (

F E B

See ed , r , erd ç , Dar a r ac , ar , r , e , rb , e a dec m , c r ram e a e a d c a d e de , reaD r d c ac .Wed ' j ' r d ce rad a e e de eD , a , eader are ca abe fada , e e erc a , eed fam der r d .

Business and Administration

The r d , c a , , edema d fem D er are e D , a d c a d e a ere ce D caD are D baD Rec , z c a e , ada , , a d be read fr , are e a d ar ' f d b , e eader . O rb , e ed ca , mea e , read fr ' ef reb eD , de de eD D f d ame aD ' d aD , fe , b e ab D e face ef re , c de ce .

Concentration areas available with the 4-year program:

- ,Acc ,
- ,Ec m , c a d F a ce
- ,H ma Re rce Ma a em e a d
- Or a , a , a Be a , r
- ,l er a , a B , e
- ,Mar e ,
- ,O era , a d S D C a Ma a em e

BBA 3YR / 4YR

Prerequisites: Pre-CaD D r A Ped Ma em a , c 40S

Economics

Ec m , c a a D e ç e e r , de fr er eD be . Lear ab e d f c Dc , ce made b c m er , e r , ma a er , c ma er , a d ç , e . T e D f D der a d e ec , ce , ec m , c e r a d , , r ca d a d , aD bac r ' d are re e ed , , a Ca a d a er ec , e .

BA 3YR / 4YR / Honours

Prerequisites: Pre-CaD D r A Ped Ma em a , c 40S

Economics and Finance

Lear e a a e f Ba S ree a d Wa D S ree a d a a dee der a d f er e a ç a d ar e a d a ç a D r me a , am der ec m . A a D e a ç a D r me a d mar e ca c r b e e eD be f a d m e m b e r f ç e .

BA 4YR / BBA 4YR

Prerequisites: Pre-CaD D r A Ped Ma em a , c 40S

Kinesiology

E D re e d f m a m em e . T , de ree ca be a Ped ar career , a , caD ac , a da , , ada ed , caD ac , (r , r , , er , , d ab D e) , r ' c D , a d r adm , , ra , , am er . l , aD d re ara , fr r rad a e d .

BKin 4YR / Honours

Athletic Therapy

T e c e f rac , ce fa a a c era , , de ed e eaD care f e , caD ac , e , d , d aD T , , De , j r re e , m m e d a e care , a d rec d , , fm c D ' e a D j r e . UW , e ' ATc r r c D m , e f D e e r ram accred ed b e Ca a d a A a c T era , A ç a , (CATA).

Note: T , , a d rec e r r ram . F D , c m a , fare , red D fc re , de , D of re r , e A a , c T era de ree rean , e W er em , r r er de , red ar da e .

BSc 4YR

Prerequisites: Pre-CaD D r A Ped Ma em a , c 40S

Physical and HOj05.4 (i)- ng oning ofc Ed6-8 (a)



JDC West

UW , e de a e a e c re a We er Ca ada ' ar e b , e c m e , , .



Co-op Program

G a reaD r d r e e r e ce a d ca r m ' ad e , a ç , !

Anthropology

Study of the physical and cultural evolution of humankind, including the study of the biological and cultural differences between modern and ancient human populations. The discipline is interdisciplinary, drawing on biology, genetics, linguistics, and archaeology. It seeks to understand the origins and development of modern humans and their societies.

BA 3YR / 4YR / Honours

Applied Computer Science

Focuses on the practical application of computer science principles and techniques. It covers areas such as software development, data analysis, and network management. The program emphasizes hands-on learning and problem-solving skills.

BA 3YR / 4YR | BSc 3YR / 4YR / Honours

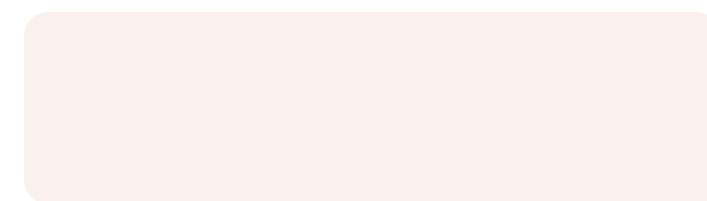
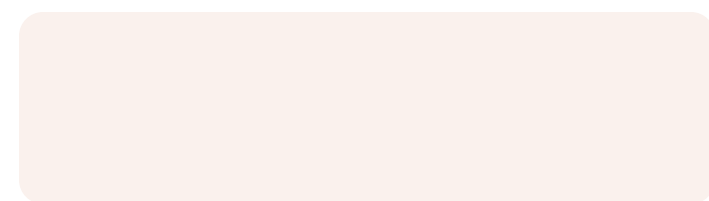
Prerequisites: Pre-Calculus or Advanced Mathematics 40S and Mathematics 40S

Bioanthropology

Combines the study of biology and anthropology to explore the evolution of the human species. It examines the genetic, morphological, and cultural changes that have shaped modern humans. The field often involves fieldwork and laboratory research.

BSc 3YR / 4YR / Honours

Prerequisites: Pre-Calculus or Advanced Mathematics 40S and Calculus 40S



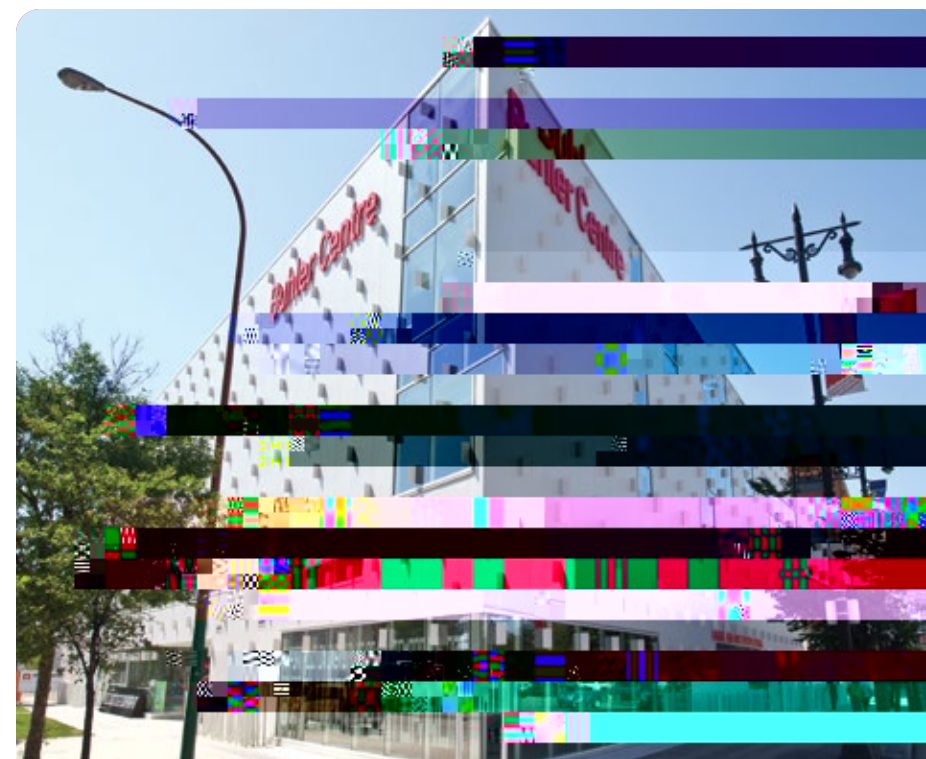
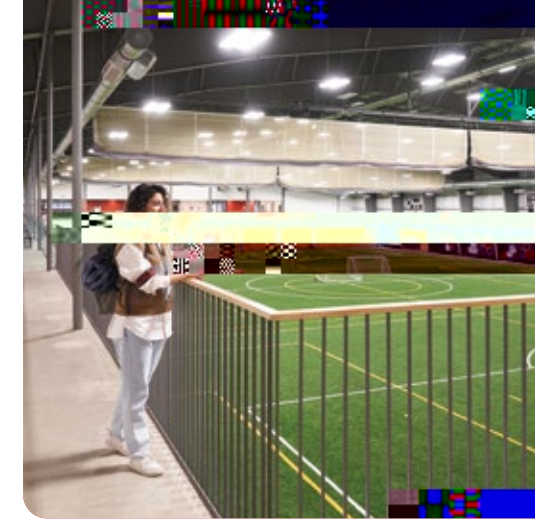
P -P S

If a e e,, ,de em, a, ,a d a, e era r fe, c a medç e,de , r, r a, ar ere. O r ma rca , e, re earc r,, e, a d r re a, f r academ, c e ce ce, de e ad a a e eed e a O r r fe, a O r ram f c, ce. A of e e UW, e r ram are d rec e r.

Program	Time at UWinnipeg	Total Duration	Grade 12 Courses (40S)
C, r rac, c	3 ear *	7 ear	Pre-Ca O r A, O ed Ma a d C em, r
De a H, e e	1 ear	3 ear	Pre-Ca O r A, O ed Ma a d C em, r B O, rec mme ded
De, r	2 ear	6 ear	Pre-Ca O r A, O ed Ma a d C em, r P, c ma be re, red a d B O, rec mme ded
La	2 ear	5 ear	Ge era O e, r m e O
Med ca Tec O	1 ear	2/5 ear	Pre-Ca O r A, O ed Ma a d C em, r P, c ma be re, red
Medç e	3 ear *	7 ear	Pre-Ca O r A, O ed Ma a d C em, r B O a d P, c are rec mme ded
Occ a, a O T era	3 ear *	5 ear	Pre-Ca O r A, O ed Ma C em, r, B O, a d P, c are rec mme ded
O m e r	3 ear *	7 ear	Pre-Ca O r A, O ed Ma a d C em, r P, c ma be re, red
P am ac	2 ear	6 ear	Pre-Ca O a d C em, r B O, rec mme ded
P, ca O era	3 ear *	5 ear	Pre-Ca O r A, O ed Ma a d C em, r
P, ç a A, a	4 ear	6 ear	Pre-Ca O r A, O ed Ma a d C em, r B O a d P, c are rec mme ded
Raç a, T era	1 ear	4 ear	Pre-Ca O r A, O ed Ma C em, r a d P, c are rec mme ded
Re, ra r T era	1 ear	4 ear	Pre-Ca O r A, O ed Ma a d C em, r B O a d P, c are rec mme ded
S ç a O W r	1 ear	4 ear	Ge era O e, r m e O
Ve eç ar Medç e	2 ear	6 ear	Pre-Ca O r A, O ed Ma a d C em, r B O a d P, c are rec mme ded

*T eed ra, are fç e fr rad a, a bac e O r de ree

⊕ If c a e r m, d, c re a e a ar f a re- r fe, a O r ram are a O cab O er UW, e de ree r ram.



H A

uwinnipeg.ca/apply

01.

Discover

Explore our programs and fees

Learn more about our programs and fees

Check our program fact sheets at: uwinnipeg.ca/factsheets

Attend Future Student Open House (November 26) or Open House (February 19)

Book a campus tour

Meet our admissions representatives and admissions advisors

Email welcome@uwinnipeg.ca for more information

Follow us on Instagram and Facebook: [@uwinnipegrecruit](https://www.instagram.com/uwinnipegrecruit)

02.

Apply

Register for admission and apply to your preferred programs at uwinnipeg.ca/future-student

Visit uwinnipeg.ca/apply to create your account

Pay the \$100 application fee

Submit your documents to the Admissions Office (including transcripts)

Attend your orientation

03.

Next Steps

Wait for your offer of admission and acceptance letter

Check your email for your offer of admission and acceptance letter

Look for WebAdvisor acceptance letter and orientation information

See a counsellor, meet with an Academic Advisor

Attend a Get Ready for First Year or First Year Information session

Register for orientation

Pay your application fee before the deadline

F A T

Things to consider before you apply



Deciding What to Study

- Consider your interests and strengths
- Consider your career goals
- Attend an information session
- Check out our website for more information



Applying for Admission

- Check our website for more information
- Visit our website for more information
- Attend an information session
- Check out our website for more information



Choosing First-Year Courses

- Check our website for more information
- Attend an information session
- Check out our website for more information
- Attend an information session

Resources for Accepted Students

- Visit our website (uwinnipeg.ca/factsheets) for more information
- Visit our website (uwinnipeg.ca/fyi) for more information
- Academic Advisor area at ab@uwinnipeg.ca
- Orientation and registration information at uwinnipeg.ca/student

Campus Living

uwinnipeg.ca/campus-living

Living on campus at UWinnipeg is a great experience. You'll have everything you need in one place. Each residence has a dedicated staff member to help you get settled. You'll also have access to a variety of amenities and services. Living on campus is a great way to make the most of your university experience.

Residence Options

McFetters Hall offers modern, single-occupancy rooms with a private bathroom, a desk, a TV, and a study table. Balmoral Houses offer single-occupancy rooms with a private bathroom, a desk, and a study table.

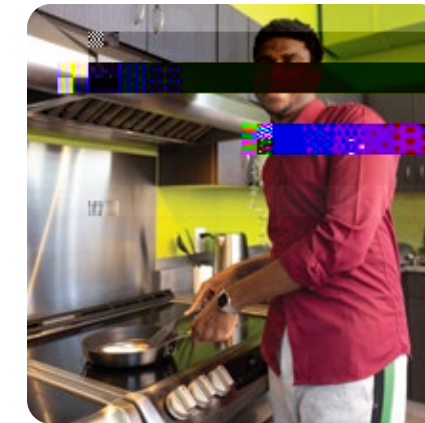
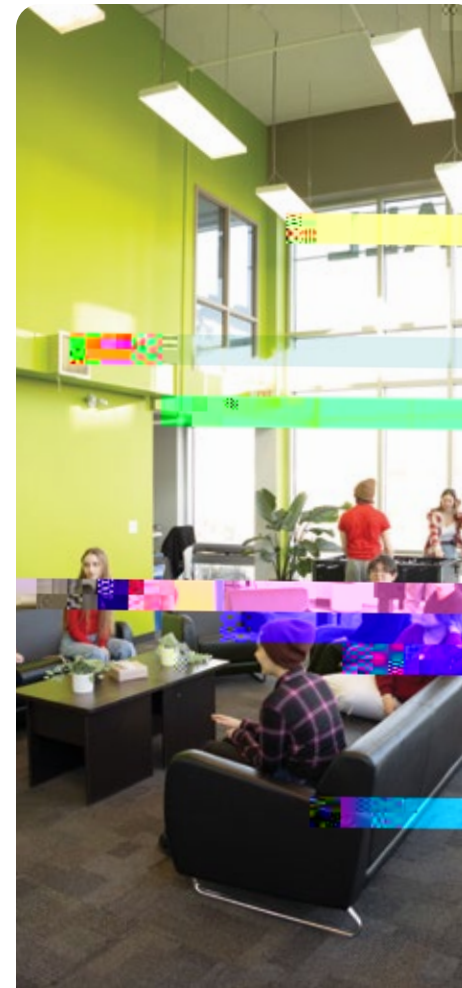
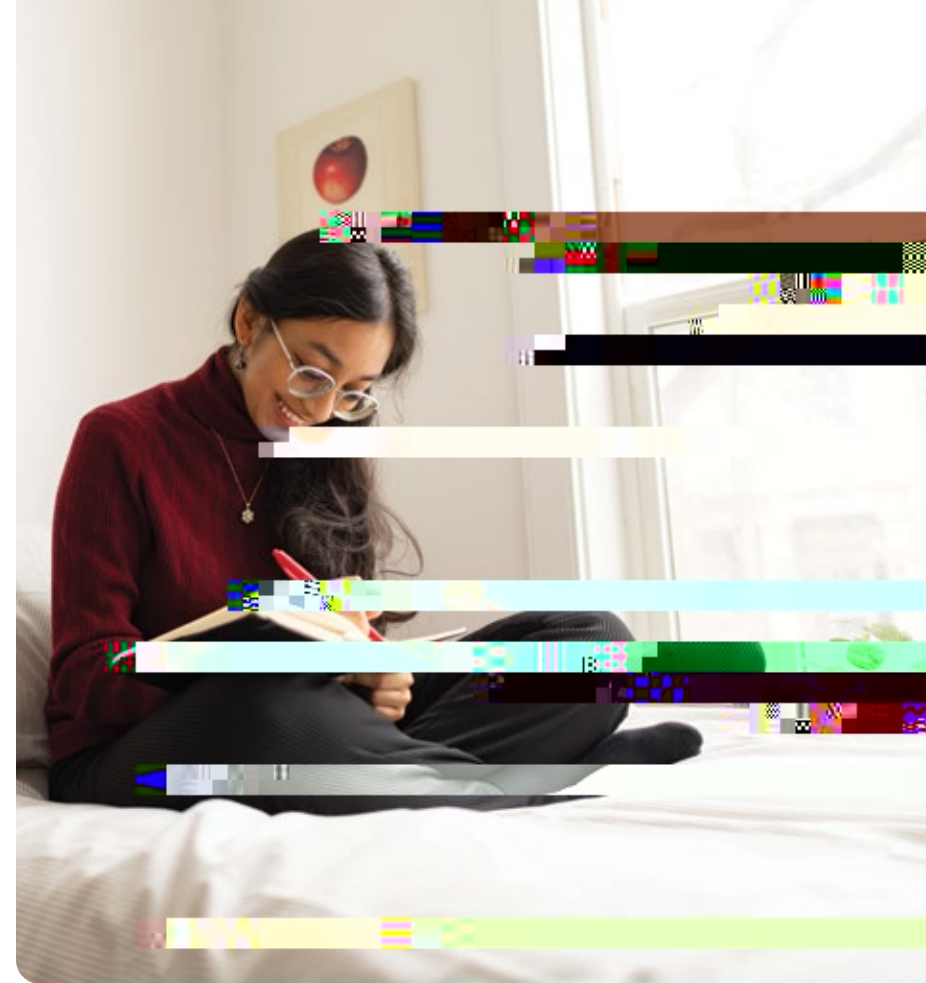
The Balmoral Houses feature modern amenities and a private bedroom, a private bathroom, and a study table.

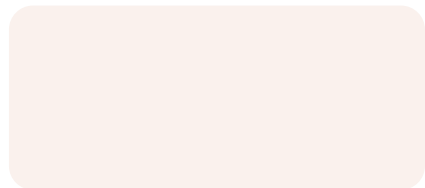
Other options include the McFetters Hall and Balmoral Houses. Each residence offers a variety of amenities and services to help you get settled.

Residence Options and Fees for One Academic Year (September to April)

McFetters Hall
Single occupancy, meal plan: \$11,735

Balmoral Houses
Single occupancy: \$5,980





r - e a r a c U W e e



S C

Talk to a Recruiter

Ha ea e, ? O r recr, me f cer are a a b b e, em a d d - er e m re, f ma, r ran a d adn, re, reme, r, dea er, e f c ar, a da era e, ab e p ea ca, .

Em a Dwelcome@uwinnipeg.ca
a d e'be, c.

Prospective Student Webinars

S ea, a recr, me f cer a d e a er, e f r r ran r rre ar eb ar.

Re, er p ea
uwinnipeg.ca/presentations

Future Students Newsletter

If O e rece em re de a d , f ma, ab UW, e de,

U E

Future Student Night

uwinnipeg.ca/fsn
N em ber 26, 2024

J, f ra, erac, e e e, ere ca a r fe r, c rre de, a d affab e a d r, e a a b b e.

Open House

uwinnipeg.ca/openhouse
Febr ar 19, 2025

T, e e, a rea ar, f r f re de a ar m re ab UW, e r ran a d r, e.



